

Daily Stock Report

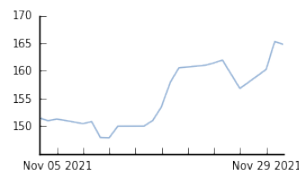
Apple Inc.

Daily report for close: Wednesday 01 Dec 2021

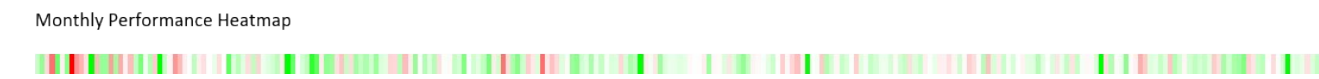
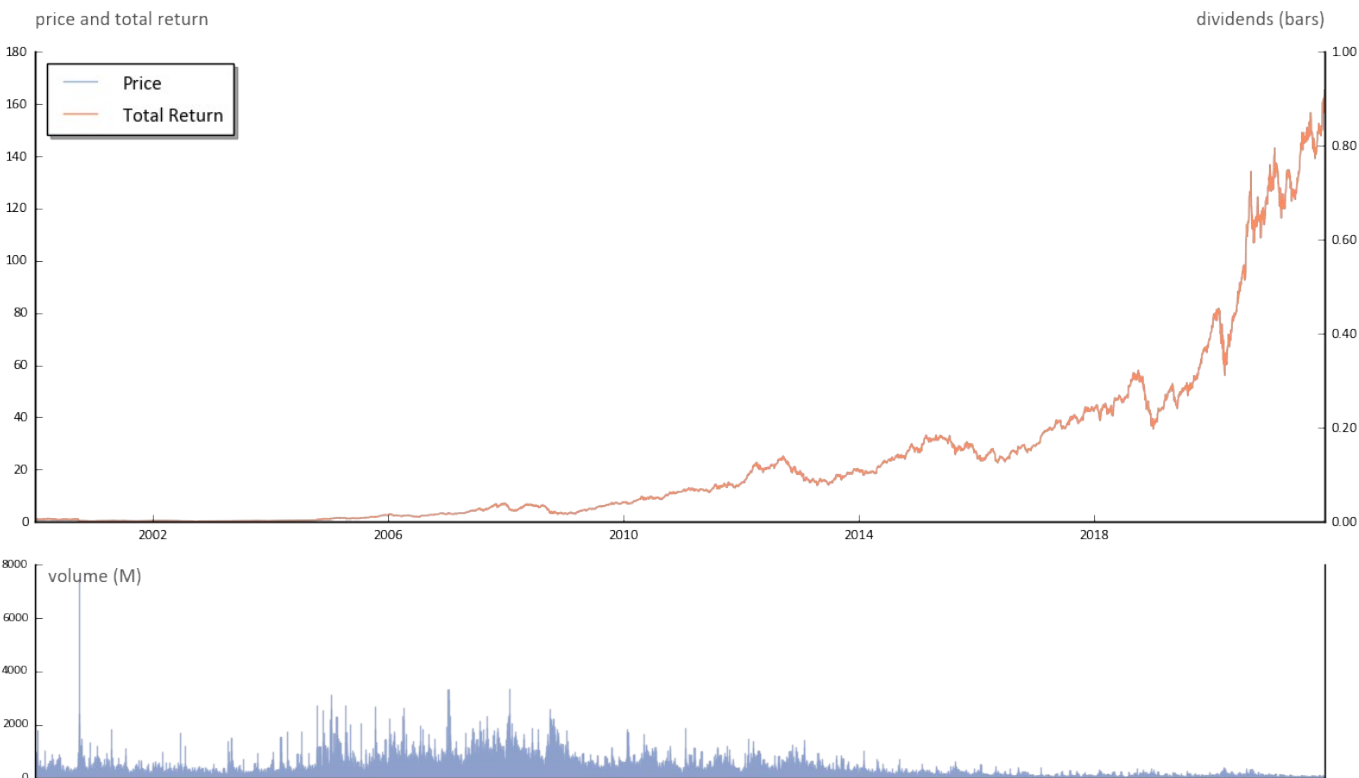
Summary

Country	US	Exchange	NASDAQ
Ticker	AAPL	Sector	Technology - Computer Manufacturing
Close	164.77 (-0.53)	52 Wk High/Low	165.30 / 116.36
Mkt Cap	\$2163.9B	Last Dividend	0

20 Day Chart



Performance



Statistics

Ticker	Price Data							Total Return			Div Yield
	1d	1m	3m	12m	MTD	QTD	YTD	3Y	5Y	10Y	
AAPL	-0.3%	10.6%	8.0%	34.3%	-0.3%	16.4%	24.2%	269.0%	502.0%	1089.7%	0.0%
SPY	-1.1%	-2.1%	-0.3%	23.1%	-1.1%	5.0%	20.5%	64.4%	111.5%	312.1%	0.0%
QQQ	2.1%	14.2%	27.5%	58.0%	9.8%	17.9%	37.3%	107.8%	190.0%	608.3%	0.0%
IWM	-0.6%	6.4%	12.0%	5.7%	5.5%	8.5%	-6.2%	13.5%	42.4%	187.3%	0.0%
AAPL	-0.3%	10.6%	8.0%	34.3%	-0.3%	16.4%	24.2%	269.0%	502.0%	1089.7%	0.0%
IBM	-1.3%	6.3%	19.3%	17.7%	1.7%	8.3%	14.6%	15.5%	20.8%	19.7%	1.1%
DELL	-2.5%	1.0%	12.5%	81.4%	0.0%	0.0%	36.0%	112.8%			0.0%